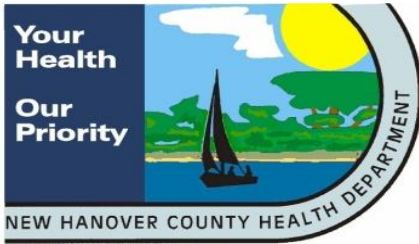


New Hanover County Health Department



First Quarter Report *July 1, 2013 – September 30, 2013*

The Centers for Disease Control and Prevention has a Strategic National Stockpile (SNS). The SNS consists of large quantities of medicines and medical supplies that can be used to protect the American public if there is a public health emergency (i.e., terrorist attack, flu outbreak, earthquake, etc.) severe enough to cause local supplies to run out. The SNS is requested by local authorities through the state. Local authorities can request SNS supplies, from the CDC, through the state.

Federal authorities have SNS supplies (sometimes referred to as “Push Packages”) strategically placed in various parts of the United States, to ensure that any request is fulfilled as quickly as possible. Each state is required to have plans in place for the receipt and distribution of SNS supplies to localities as quickly as possible. Therefore, The State of North Carolina Public Health Preparedness and Response - Division of Public Health (PHP&R), requires that each county health agency establish and maintain a SNS Plan. The plan is reviewed and scored annually by PHP&R staff to ensure that each county has a SNS plan that is consistent with CDC guidelines.

The New Hanover County Health Department has consistently maintained a SNS plan that is in compliance with PHP&R guidelines (as established by the CDC). The Preparedness Coordinator, under the supervision of the Deputy Health Director, is responsible for making sure that New Hanover County Health Department’s SNS plan is up-to-date and readily available for review or actual use. This is done through annual staff trainings, quarterly call-down exercises, meetings with stakeholders and related Emergency Preparedness and Response activities.



*Over 130 years of
Public Health Service*



**2029 South 17th Street
Wilmington, NC 28401
(910) 798-6500**

www.nhcgov.com/health
www.facebook.com/NHCHHealth
www.twitter.com/NHCHHealth

Board of Health

Robert E. Lewis
Chair

Michael E. Goins, OD
Vice-Chair

Beth Dawson
County Commissioner

Brian Ensign
Engineer Member

Melody S. Evans, DVM
Veterinarian Member

Kim Thrasher Horne,
PharmD, BCBS, FCCP, CPP
Pharmacist Member

Zachery S. Mitcham
Public Member

Linda (Candy) Robbins
Public Member

Robert J. Schiffel, DDS
Dentist Member

Stephanie D. Smith, PhD, RN
Nurse Member

Health Director
David E. Rice, MPH, MA

New Hanover County Health Department

- ❖ The oldest health department in North Carolina
- ❖ The first health department to become accredited in Southeastern NC
- ❖ In 2014 we will expand at our current location, adding more than 16,000 square feet of space allowing us to better serve New Hanover County citizens



Our mission is to promote a safe and healthy community

Our vision is healthy people living in a safe environment to sustain a strong community focused on prevention and wellness

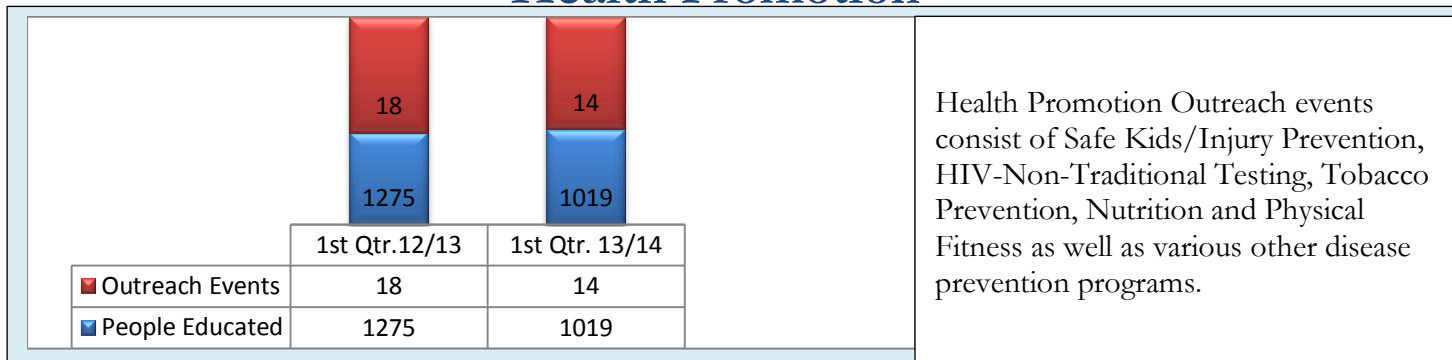
“Healthy People, Safe Environment, Strong Community”

Health Programs Administration

Environmental Health Services

Services	1 st Qtr. 12/13	1 st Qtr. 13/14
Routine Inspections: Restaurant & Child Care Facilities	1,063	864
Re-Inspections (to inspect more than once)	n/a	14
Permits Issued	122	87
Public Festival Permits/Temporary Food Establishments	49	62
Compliance, Complaint and Consultative visits	650	479
Swimming Pool Inspections (Public pools/ spa)	188	77
Water Samples Collected (Bacteriological and Other)	112	134
Customer Service Requests	143	109
Spraying-Man Hours	319.5	333.0
Acres Larvacided	121.5	91.5
Mosquito Light Trap Totals	18,877	14,802

Health Promotion



Clinic Services

Services	1 st Qtr. 12/13	1 st Qtr. 13/14
Child Health Visits	71	86
STD visits	1,107	826
Family Planning Visits	943	736
BCCCP Clients	38	38
Limited Physicals (Adults & Children)	206	161
TB Skin Test Read	944	878
Travel Clinic Visits	107	122
Immunizations; Ages 0-18 years	1,719	1,372
Immunizations; Ages 19+	2,844	2,166
Refugee Health Clients Unduplicated)	18	4

STD- Sexually Transmitted Disease **BCCCP-** Breast and Cervical Cancer Control Program **TB-** Tuberculosis

Personal Health Services

Lab Services

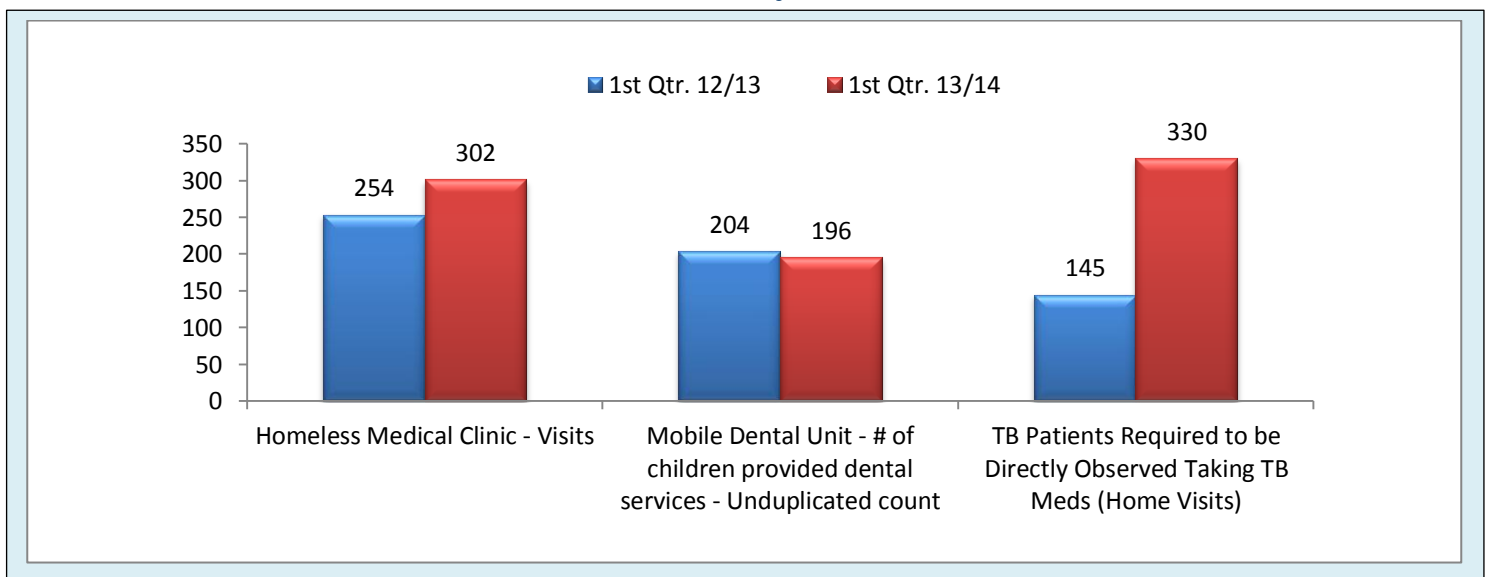
	1 st Qtr. 12/13	1 st Qtr. 13/14
In House Procedures		
Gonorrhea Cultures	591	430
Hematology	1406	1460
Pregnancy Testing	445	419
Syphilis Screening	972	697
Urinalysis	150	140
Water Bacteriology	83	84
Referral Procedures		
Chlamydia / Gonorrhea	777	700
HIV	931	704
Lead	395	384
Pap Smears	317	235

Samples may include blood, urine, or other bodily fluid.
Water Bacteriology tests are samples from wells.

Reportable Diseases

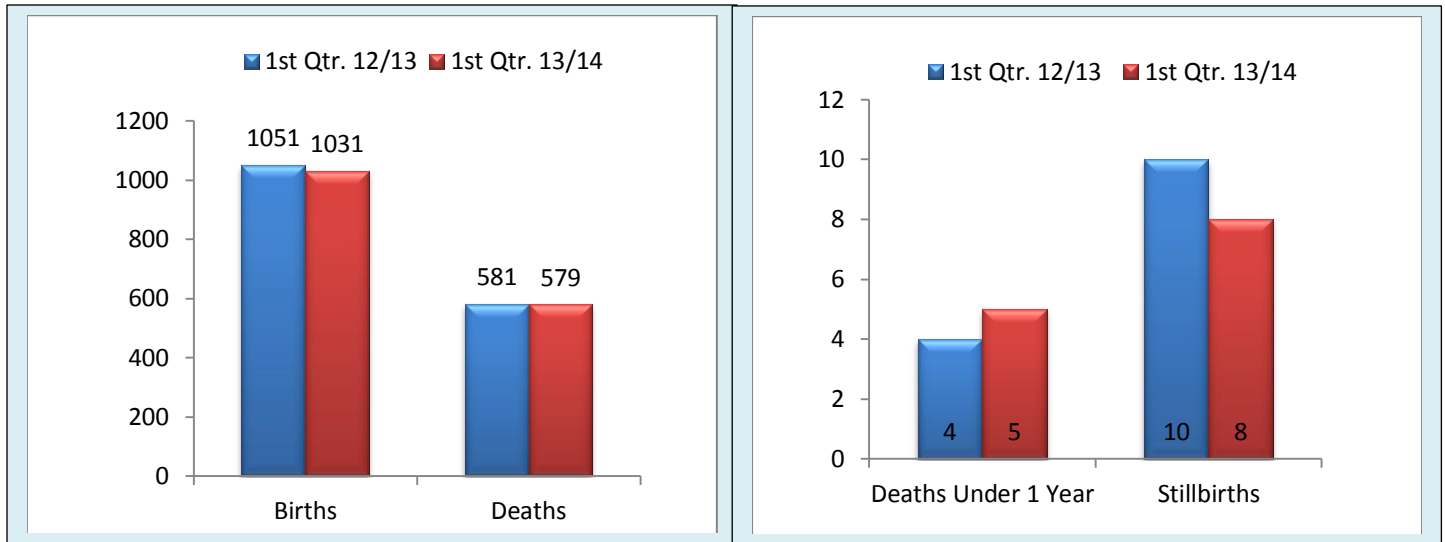
	1 st Qtr. 12/13	1 st Qtr. 13/14
Campylobacter	11	2
Chlamydia	233	199
Cryptosporidiosis	0	0
Dengue Fever	0	1
E. Coli shiga toxin producing	0	1
Foodborne, other	4	0
Gonorrhea	59	59
Hepatitis B, Acute	1	1
Hepatitis B, Carrier	3	2
Hepatitis C, Acute	3	3
Influenza-like Illness Outbreak	31	18
Legionellosis	0	1
Lyme Disease	0	2
Nongonococcal Urethritis (NGU)	45	43
Pertussis	10	0
Rocky Mount Spotted Fever	5	6
Salmonella	44	48
Shigella	3	0
Streptococcal-Group A Invasive	0	1
Syphilis	0	0
Vibrio	0	0

Community Health



Personal Health Services

Vital Statistics



Nutrition

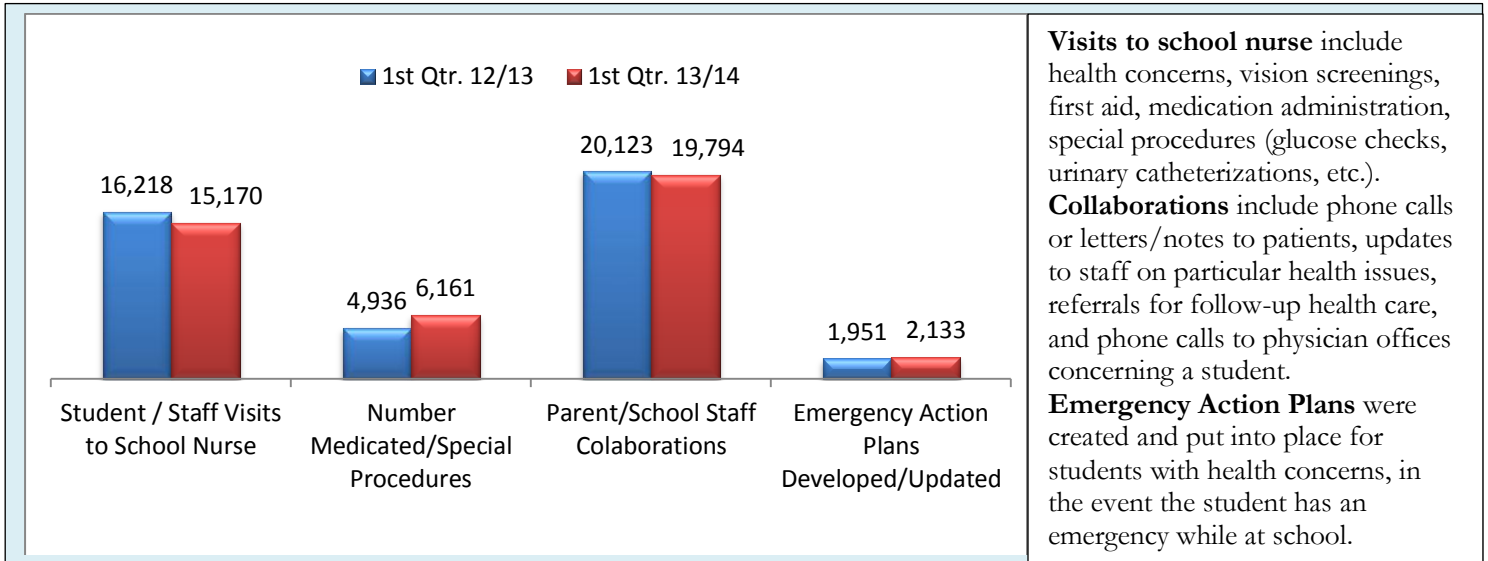
<p>WIC- Supplemental Nutrition Program for Women, Infants, and Children providing nutritious food, nutrition education, and breastfeeding support for pregnant and postpartum women and infants and children up to age 5 years who qualify for the program.</p> <p>DERP- Diabetes Education Recognition Program: 10 hours of diabetes self-management education classes provided by a registered dietitian and/or registered nurse.</p>	Services	1 st Qtr. 12/13	1 st Qtr. 13/14
	WIC Nutrition Visits	2,795	2,901
	General Nutrition Visits	48	57
	New Clients in Breastfeeding Peer Counseling	84	58
	New Clients in DERP	8	9

Maternal Health

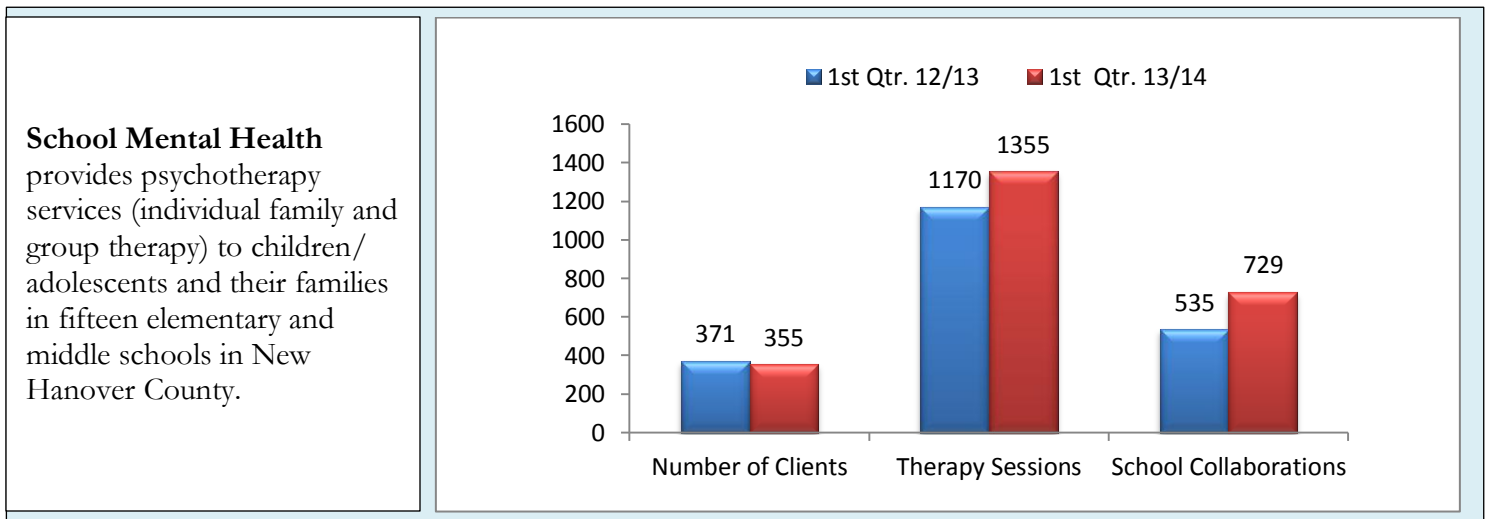
Services	1 st Qtr. 12/13	1 st Qtr. 13/14	
Pregnancy Care Management Enrolled	572	715	<p>Pregnancy Care Management: Case management and home visiting for pregnant women.</p> <p>Postpartum/Newborn Home Visits: Home visits for new moms and babies discharged, recommended within 2 weeks, upon discharge from the hospital.</p> <p>Health and Behavior Interventions: Counseling services for high risk pregnant women.</p>
Postpartum/Newborn Home Visits	70	18	
Health & Behavior Interventions	37	32	

Personal Health Services

School Health



School Mental Health



Care Coordination for Children (CC4C)

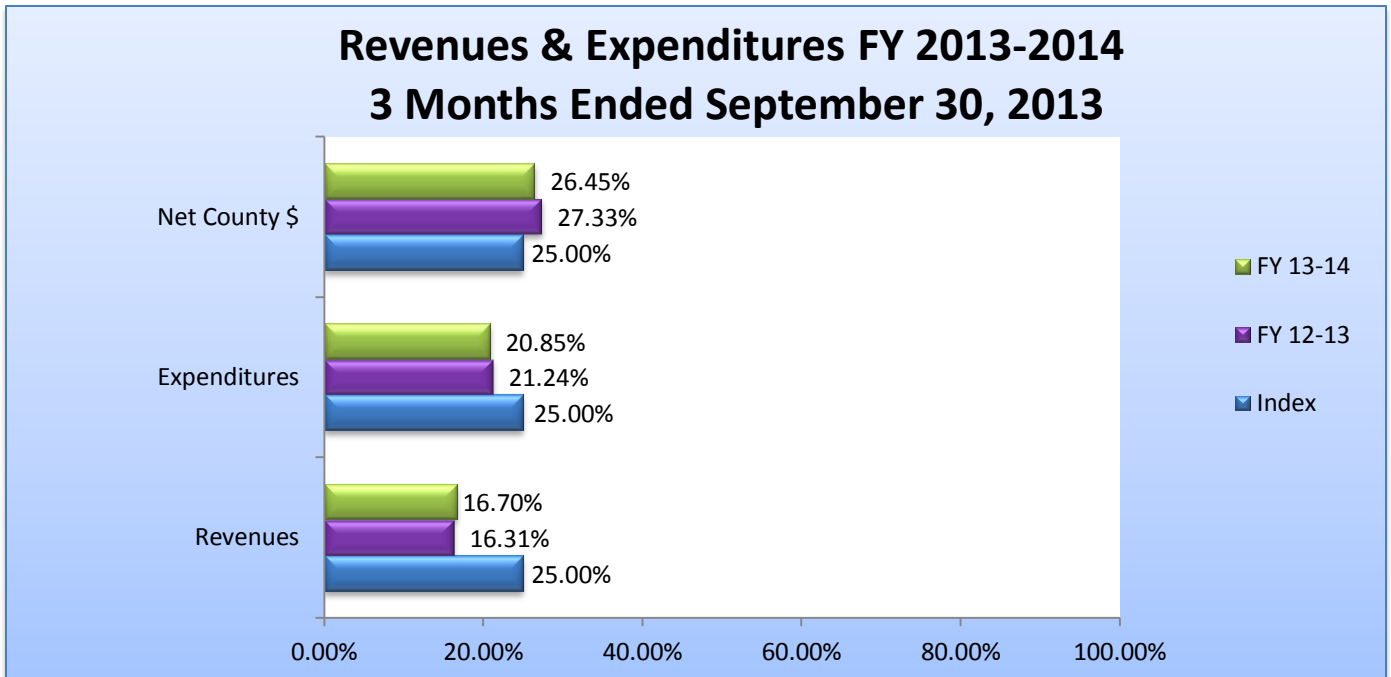
Services	1 st Qtr. 12/13	1 st Qtr. 13/14
CC4C Contacts	1,072	2,255
CC4C -Clients Receiving Services	321	645
In-Home Counseling/Home Visits	75	55

CC4C Contacts: number of contacts with families either by phone, home visits or contacts with someone in the community on their behalf

CC4C Clients Receiving Services: total number of children served for the quarter, unduplicated

In Home Counseling – Service Contacts: number of face-to-face contacts for family therapy.

Financial Report



Revenues and Expenditures FY 2013-2014 - 3 Months Ended September			
	Index	FY 12-13	FY 13-14
Revenues	25.00%	16.31%	16.70%
Expenditures	25.00%	21.24%	20.85%
Net County \$	25.00%	27.33%	26.45%